

JUBILEE LANDMARK

Your expectations are our foundations....

3 BHK LUXURY APARTMENTS @ Srinagar Colony, Hanamkonda





JUBILEE LANDMARK

Your expectations are our foundations....

A perfect home for a perfect few

A stylish suave apartment complex designed not just as a home but to be a part of your lifestyle. Located at the most elite and admired locale in the good location, the apartment proves to be a worthy address to own. With just a walk away from all comfort factors, Jubilee's Landmark comes loaded with modern amenities and offers utmost privacy and security.

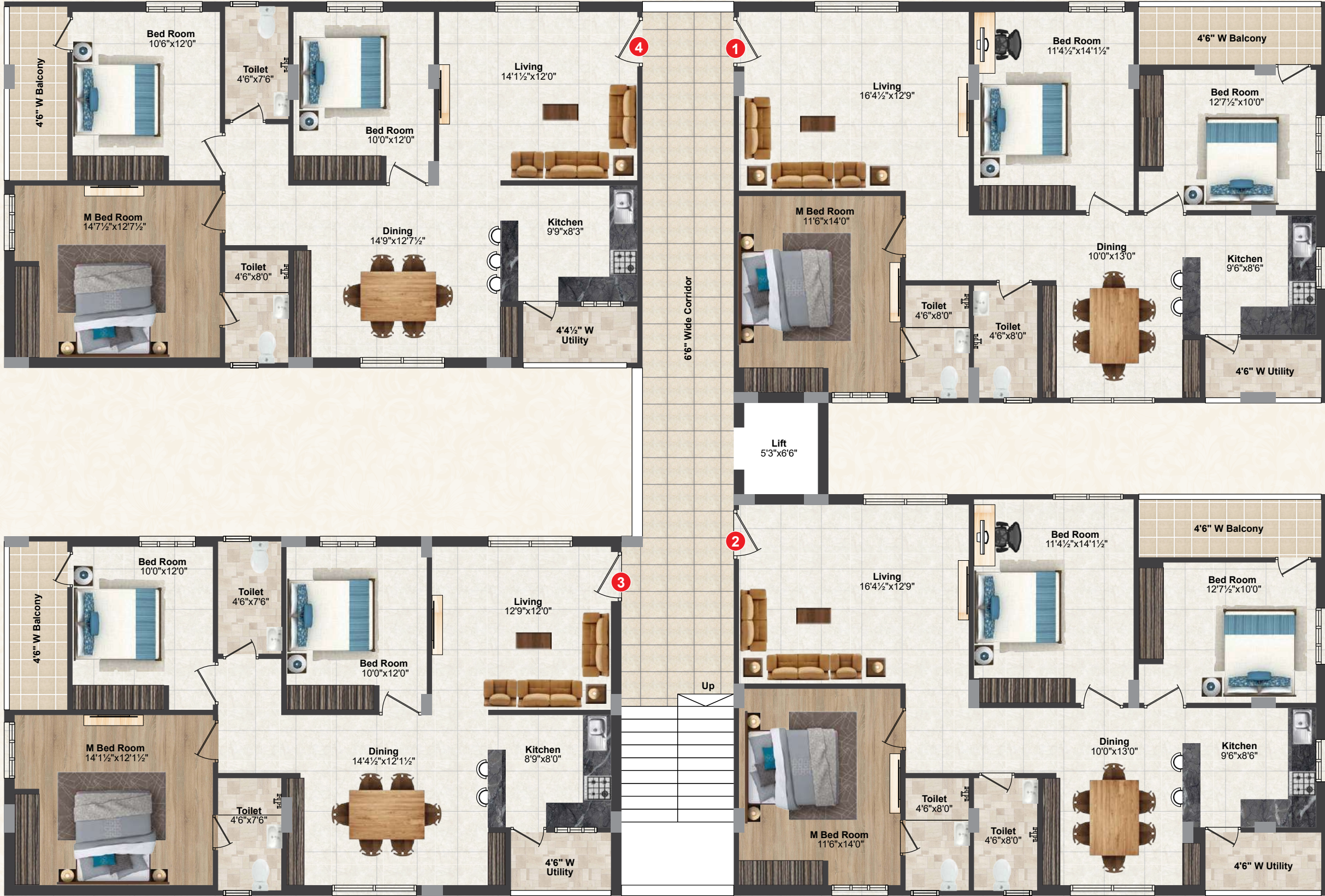


TYPICAL FLOOR PLAN



AREA STATEMENT

Flat Nos.	Facing	Carpet Area Sft	Balalcony & Wash Areas in Sft	Walls in Sft	Common Area in Sft.	Unit Salable Area in Sft
1	West	1032.71	97.87	81.42	303.00	1515.00
2	West	1032.71	97.87	81.42	303.00	1515.00
3	East	958.62	91.68	81.70	283.00	1415.00
4	East	1014.99	94.73	78.28	297.00	1485.00



RCC FRAMED STRUCTURE

- RCC Framed Structure
- Brick Masonry with Table Molded Mud / Clay Bricks with Natural Sand in Cement Mortar.
- All the External Walls of 9"/4.5" thickness and Internal Walls of 4.5" thickness.

PAINTING

- External: Putty / Texture finish with Two Coats of Exterior Emulsion Paint of Asian / Nippon or Equivalent make over a Coat of Primer.
- Internal: Smooth Putty finish with Two Coats of Acrylic Emulsion Paint of Asian / Nerolac or Equivalent make over a Coat of Primer.

COMMUNICATION

- Provision for TV Connection & Telephone Point in Living Room.
- Intercom Facility to all the Flats connecting security.

ELECTRICAL

Concealed Copper Wiring in Conduits for Lights, Fans and Power Plug Points wherever necessary of Finolex or Equivalent make.

- Power Outlets for Air Conditioners in all Bedrooms.
- Power Outlets for Geyser & Exhaust Fans in all Bathrooms.
- Power Plug Points for Chimney, Refrigerator, Mixer & Grinder.
- Plug Points for TV & Audio Systems etc. wherever necessary.
- Three Phase supply for each Flat and Individual Meter basis.
- Miniature Circuit Breakers (MCB) & ELCB for each distribution board of LEGRAND or Equivalent make.
- Modular Switches and Sockets of LEGRAND or Equivalent make.

LIFT

Lift from reputed manufacturers like Kone / Otis / Johnson or Equivalent.

POWER BACK UP

Generator Power Back Up for all Lights & Fans Points with in flat and for Common Amenities.

PARKING AREA

VDF Flooring or Interlock Pavers.

SECURITY

Surveillance Cameras at the Main Security Entrance and at appropriate locations to monitor.

WATER SUPPLY

- Domestic Water from Bore Wells.
- Drinking Water from GWMC.

CLADDING & DADOING

- Kitchen: Designer Glazed Ceramic Tiles Dado up to 2' height above Kitchen Granite Platform.
- Bathrooms: Designer Glazed Tile Dado up to 7' height.
- Utilities/Wash: Glazed Ceramic Tile Dado up to 3' height.

UTILITY/WASH

Provision for Washing Machine & Tap in Wet Area for Washing Utensils etc.

SPECIFICATIONS

FLOORING

- Flooring: Vitrified Flooring with 600 x 600 mm size for Living, Drawing, Dining, Bedrooms and Kitchen of Kajaria / RAK / AGL/ Simpolo / NITCO make or Equivalent.
- Bathrooms, Utility: Anti Skid Ceramic Tiles for flooring of Kajaria / AGL / RAK/ Simpolo / NITCO make or Equivalent.
- Staircase & Lobbies: Granite / Vitrified Tiles with Skirting.
- Balconies: Anti Skid Ceramic Tiles of NITCO / Kajaria / RAK / AGL/ Simpolo make or Equivalent.

DOORS

- Main Door Frames: Teak Wood Frames and Panel Type Shutters with Brass / S.S along with reputed make hardware.
- Internal Door Frames: Teak Wood Frames and Flush Doors / Shutters with reputed make hardware.

KITCHEN

- Granite platform with Stainless Steel Sink of NIRALI or Equivalent make.
- Separate Municipal Water Tap along with Bore Well Water Tap.
- Provision for fixing of Water Purifier, Exhaust Fan.

TOILETS, PLUMBING & SANITARY FIXTURES

- EWV Wash Basins of Hindware / Parryware or Equivalent make.
- Hot and Cold Wall Mixer with Shower.
- Provision for Geyser and Exhaust Fan
- All CP Fittings of Jaguar or Equivalent make.

WINDOWS

All windows will be Sliding Type of reputed UPVC make with 5mm thick Plain Glass along with MS Safety Grills.

PARKING PLAN



JUBILEE LANDMARK

Your expectations are our foundations....



- 100% Vaastu
- 2 Side Roads
- Ideally located
- Power backup generator
- Excellent Ventilation
- Limited flats

AMENITIES & FEATURES

- Quality construction
- Independent Flats
- Tot-Lot
- 50 Meters to NGO's Colony Road
- Intercom Facility
- CCTV surveillance
- RERA Approved Project

LOCATION MAP



Promoters

JUBILEE CONSTRUCTIONS & DEVELOPERS

Office Address : Flat no.103, Chadravadhan manson, Circut house Road, Nakkalagutta Hanamkonda.

Phone : **9848745528, 0870-2545527.**

Site Address : Srinagar Colony Hanamkonda.



Scan this QR code to view the Website

RERA No. P00300000108

NOTE : This brochure is only a conceptual presentation of the project and not a legal offering. The promoters reserve the right to make changes in plans, specifications and elevation as deemed fit.

DISCLAIMER : Disclaimer : The information provided in the brochure(including any images, brochures, plans etc) is for informational purposes only and you shall not rely or depend on such information for the purpose of making any purchase in any of our projects. The information in the brochure does not constitute an invitation to purchase, advertisement, marketing or offer for sale of any of the units in our projects. We will be taking steps for registration of the project in accordance with the Real Estate Regulation Authority Act, 2016 as soon as the authority is constituted.